

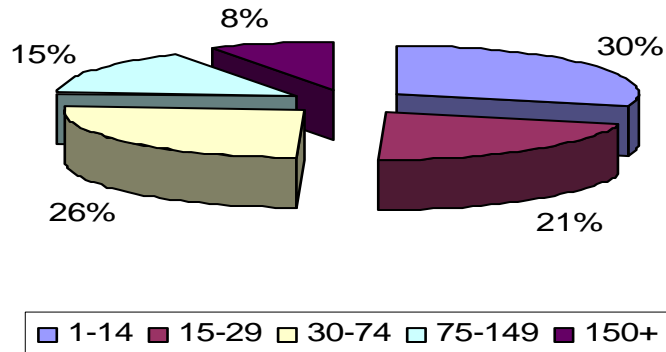
GLA Chapter Members - What Do We Look Like?

By: Brian Robbins, CLM

With the help of the folks at ALA Headquarters we are able to provide our readers with the following demographics of our Greater Los Angeles Chapter Members as of May 2005:

- Mostly female (82%)
- Average age over 45 (weighted average age 49.8)
- Majority with college degrees (over 60%)
- Certified Legal Managers (CLMs) (11; 3%)
- Vast majority employed by private law firms (over 90%)
- Most employed at multi-office firms (over 60%)
- About 50% employed at Firms with 29 or fewer attorneys
- Average length of ALA membership ~ 8.5 years

GLA Members - Size of Firm (# of attys)



GLA Members - Job Responsibilities

